



Global Neuro

Final program

Curso Global Neuro— Advanced Neurotrauma at the CLAN Chile 2024

October 20, 2024, Santiago, Chile



Content

| | |
|----|--|
| 3 | Global Neuro welcomes you |
| 4 | Course description |
| 4 | Target participants |
| 4 | Learning objectives |
| 5 | Course Chair |
| 5 | Course Director |
| 5 | Local Faculty |
| 5 | Regional Faculty |
| 5 | International Faculty |
| 6 | Agenda, October 20, 2024 |
| 9 | Course Venue |
| 9 | Event organization |
| 9 | Global Neuro funding sources |
| 9 | Event organization compliance |
| 10 | General information |
| 11 | Global Neuro Foundation—Principles of Educational Events |
| 12 | Sponsors |

Global Neuro welcomes you

On January 1, 2018, AONeuro became Global Neuro to broaden our geographical reach and to collaborate with multiple partners. Our new foundation is incorporated in Switzerland and is ready to serve you and improve educational and practical experiences in patient care and outcomes.

We offer educational events across the world, with rigorously prepared and evaluated curricula in multiple cultural and educational formats. Global Neuro's educational offerings include lecture presentations, interactive case discussions, small group discussions, practical exercises, simulation exercises, and online education. Global Neuro strives to increasingly collaborate with regional, national, and international societies and organizations to deliver symposia and courses at congresses and annual meetings. These partnerships enable us to provide the best formats possible.

While our initial educational efforts began with neurosurgeons, we are increasingly collaborating with neurologists, emergency physicians, trauma surgeons, neurointensivists, neuro-anesthesiologists, neuroradiologists, and other neuro professionals to provide comprehensive education and program development opportunities. Emergency care, specific neurological care, and recovery are too complex to depend upon a single discipline. As such, collaboration is required to be able to make the greatest impact on our patients' progress and outcomes.

We hope this program meets your expectations, as it is based on continuous development, study, evaluation, and discussion. Please let us know if you have ideas or suggestions for how we can enhance your learning and educational experience.

Join our network of professionals as we work together to improve the results in neuro care and rehabilitation for all our patients.

Warm regards,

Andrés M. Rubiano
President Global Neuro Foundation



Course description

This full-day course covers the current best strategies and considerations for neurotrauma care, especially advanced neuromonitoring in different scenarios of neurotrauma. The course explores TBI and SCI management protocols, their implementation, and results in different resource-level scenarios, focusing on advanced monitoring.

The content is delivered using multiple methods: comprehensive lectures concentrate on core material understanding, and case presentations increase this knowledge and enrich the discussion of trauma management. The case-based discussions and practical skills link the lectures with the problems encountered in real-life clinical practice.

Participants will be able to interact throughout the course.

Target participants

The Global Neuro Course—Advanced Neurotrauma has been developed for neurosurgeons, intensivists, critical care physicians, residents, and other health care providers, including emergency medicine doctors and trauma surgeons, dedicated to the integral management of neurotrauma and complex and interdisciplinary patient care.

Learning objectives

By completing this course, participants will be better able to:

- Understand technical aspects of neurotrauma diagnosis and management, focusing on advanced neuromonitoring evaluation systems.
- Review different protocols proposed for guiding therapy in neurotrauma patients using strategies according to various levels of available resources.
- Practice advanced neuromonitoring strategies and discuss scenarios of applicability and decision-making for different conditions in neurotrauma patients.

Course Chair



Andres M. Rubiano
Universidad El Bosque
Bogotá, Colombia

Course Director



Wellingson Paiva
University of Sao Paulo
Sao Paulo, Brazil

International Faculty

| | | |
|-------------------------|----------------------|---------------|
| Gregory Hawryluk | Cleveland Clinic | Akron, USA |
| Franco Servadei | University of Milano | Milano, Italy |

Regional Faculty

| | | |
|-----------------------|---------------------------|-----------------------------------|
| Adrián Zapata | Hospital La María | Medellin, Colombia |
| Amaya Alvarez | Meditech Foundation | Cali, Colombia |
| Franly Vásquez | Clinica Dr. Abel González | Santo Domingo, Dominican Republic |
| Robson Amorim | Universidad de Amazonas | Manaus, Brazil |

Local Faculty

| | | |
|------------------------|-------------------------|---------------------|
| Benjamín Abarca | Hospital Puerto Montt | Puerto Montt, Chile |
| José Moretti | Clinica Las Condes | Santiago, Chile |
| Mario Canitrot | Clinica Indisa | Santiago, Chile |
| Patricio Bustos | Universidad de Chile | Santiago, Chile |
| Sergio Aguilera | Hospital Hermina Martin | Chillan, Chile |

October 20, 2024

| TIME/ HORA | AGENDA | WHO/ QUIEN |
|----------------------------|--|--|
| 08:30 – 09:00 | Registration: Check-in and provision of course material <i>Inscripciones: Registro y entrega de material del curso</i> | Ximena Rodriguez |
| 09:00 – 09:10 | Introduction and objectives <i>Introducción y objetivos</i> | Andrés Rubiano |
| Session / Sesión: 1 | Acute Care in Neurotrauma (ER – Operation Room and ICU) *Each presentation includes a 5-minute Q&A session. Cuidado Agudo en Neurotrauma (Emergencias– Quirófano y UCI) *Cada presentación incluye una sesión de preguntas y respuestas de 5 minutos. | Moderator / Moderador: Robson Amorim |
| 09:10 – 09:30 | Damage Control Resuscitation in the ER for the Polytrauma Patient with TBI <i>Reanimación Control de Daños en la Sala de Emergencias para el Paciente Politraumatizado con TCE</i> | Adrián Zapata |
| 09:30–09:50 | Biomarkers in Acute TBI: Where do We Stand Today? <i>Biomarcadores en el TCE agudo: ¿Dónde estamos hoy?</i> | Andres Rubiano |
| 09:50–10:10 | The CREVICE Protocol for Managing Severe TBI in Areas without ICP Monitoring <i>El protocolo CREVICE para el manejo de TCE grave en áreas sin monitoreo de PIC</i> | José Moretti |
| 10:10–10:30 | The Global Consensus for Non-Invasive ICP Monitoring in Severe TBI Patients (Bruxelles – ICONIC) <i>El Consenso Mundial para la monitoria No Invasiva de la PIC en pacientes con TCE grave (Bruselas – ICONIC)</i> | Andrés Rubiano |
| 10:30–10:50 | The SIBICC Protocol for Managing Patients with Invasive ICP Monitoring <i>Protocolo SIBICC para el Manejo de Pacientes con Monitorización Invasiva de la PIC</i> | Wellingson Paiva |
| 10:50–11:10 | COFFEE BREAK | All / Todos |
| 11:10–11:30 | The SIBICC Protocol for Managing Patients with Invasive ICP + PTiO2 Monitoring <i>Protocolo SIBICC para el manejo de pacientes con monitorización invasiva de ICP + PTiO2</i> | Mario Canitrot |
| | INTERACTIVE PANEL- CASE PRESENTATIONS PRESENTACIONES DE CASOS – PANEL INTERACTIVO | Moderator / Moderador: Wellingson Paiva |
| 11:30–12:00 | Case 1: Non-Invasive ICP and Decision Making in TBI (15m) Caso 1: PIC no invasiva y toma de decisiones en el TCE (15m) | Amaya Alvarez |
| | Case 2: SIBICC Protocols in TBI Management (15m) Caso 2: Protocolos SIBICC en el manejo de TCE (15m) | Sergio Aguilera |
| 12:00–13:00 | Lunch / Almuerzo | All / Todos |

October 20, 2024

| TIME/ HORA | AGENDA | WHO/ QUIEN |
|----------------------------|--|---|
| Session / Sesión: 2 | <p>Global Perspectives and Special Considerations in Neurotrauma Care. *Each presentation includes a 5-minute Q&A session.</p> <p>Perspectivas Globales y Consideraciones Especiales en la Atención de Neurotrauma *Cada presentación incluye una sesión de preguntas y respuestas de 5 minutos.</p> | Moderator / Moderador: Benjamín Abarca |
| 13:00–13:20 | Global Health and Neurotrauma: An International Perspective <i>Salud Global y Neurotrauma: una perspectiva internacional</i> | Franco Servadei |
| 13:20–13:40 | Pediatric TBI: The BTF Guidelines and their Applicability <i>TCE Pediátrico: Las Guías de BTF y su aplicabilidad</i> | Wellingson Paiva |
| 13:40–14:00 | Neurotrauma in the Elderly: Tips and Tricks in TBI and SCI Acute Care <i>Neurotrauma en personas Mayores: Consejos y Recomendaciones en Manejo Agudo de TCE y TRM</i> | Gregory Hawryluk |
| 14:00–14:20 | Minimally Invasive Surgery for Intracranial Traumatic Hematoma <i>Cirugía mínimamente invasiva para el hematoma traumático intracraneal</i> | Robson Amorim |
| 14:20–14:40 | Penetrating TBI Care: What is New? <i>Cuidado de TCE penetrante: ¿Nuevas tendencias?</i> | Gregory Hawryluk |
| 14:40–15:00 | Actual Trends in the Management of Brain Edema <i>Tendencias actuales en el manejo del edema cerebral</i> | Andres Rubiano |
| 15:00–15:20 | COFFEE BREAK | All / Todos |
| | <p>INTERACTIVE PANEL – CASE PRESENTATIONS PRESENTACIONES DE CASOS – PANEL INTERACTIVO</p> | Moderator / Moderador: Franly Vásquez |
| 15:20–15:50 | <p>Case 1: Neurotrauma in the Elderly (15m) Caso 1: Neurotrauma en el Adulto Mayor (15m)</p> <p>Case 2: Penetrating TBI (15m) Caso 2: TCE penetrante (15m)</p> | Patricio Bustos Benjamín Abarca |
| Session / Sesión: 3 | Hands-On Activities / Ejercicios Prácticos | All / Todos |
| 15:50–16:30 | <p>Skill Station I: Non-Invasive ICP Monitoring (ONUS / TCD) Estación de Habilidades I: Monitoreo no invasivo de la PIC (USNO/DTC)</p> <p>Skill Station II: Non-Invasive ICP Monitoring (Pupillometry) Estación de Habilidades II: Monitorización no invasiva de de la PIC (Pupilometría y evaluación no invasiva de la onda de PIC)</p> | Amaya Alvarez, Franly Vásquez Andres Rubiano, Wellingson Paiva |

October 20, 2024

| TIME/ HORA | AGENDA | WHO/ QUIEN |
|-------------|---|----------------------------------|
| | <p>Skill Station III: Invasive ICP Monitoring and Waveform Analysis Estación de Habilidades III: Monitorización invasiva de PIC y Análisis de forma de onda</p> | Mario Canitrot, Adrian Zapata |
| 16:30–17:10 | <p>Skill Station IV: Cranial Decompression, Reconstruction and Expansion Craniotomy Estación de Habilidades IV: Descompresión y reconstrucción craneal con craneotomía expansiva</p> | Benjamín Abarca, José Moretti |
| 17:10–17:30 | <p>Final remarks, evaluations and certification Comentarios finales, evaluaciones y certificación</p> | All / Todos |

Course Venue



Sheraton Santiago Hotel and Convention Center

Room: San Cristobal

Avda. Santa María 1742, Santiago, Chile

Tel.: +56 2-22335000

Website: [Sheraton Santiago Hotel and Convention Center](https://www.sheraton.com/hotel/santiago)

Event organization

Global Neuro Foundation

Clavadelerstrasse 8J

7270 Davos

Switzerland

Event organizer

Ximena Rodriguez

Phone +1 321 732 2199

Email: ximena.rodriquez@globalneuro.org

Global Neuro funding sources

Unrestricted educational grants from different sources are collected and pooled together centrally or for specific events by the Global Neuro Foundation. All events are planned and scheduled by local and regional Global Neurosurgeon groups based on local needs assessment. We rely on commercial partners for in-kind support to run simulations/skills training if educationally needed.

Event organization compliance

In certain countries where Global Neuro has no office but offers educational events, the Global Neuro cooperates with third-party companies to conduct local organization and logistics, as well as to communicate with participants in the local language. In these cases, the Global Neuro Foundation has put rules and guidelines in place (Letter of Secondment, Global Neuro Foundation—Principles of Educational Events) to ensure that this cooperation has no impact on the curricula, scientific program, or faculty selection.

General information

Event fee

As a neurosurgeon you must be registered for the Latin American Congress of Neurosurgery [CLAN Chile 2024](#) and pay an additional 50 USD fee to the CLAN.

We highly recommend you register for the course as early as possible as there are limited seats available.

Course material, coffee breaks, lunch and the course certificate are all included in the course fee.

Registration

Please click on the registration links below to register for the event: **Limited seats available.**

1. First register to the congress here:

[CLAN Chile 2024 – XLI Congreso Latinoamericano de Neurocirugía | 20-25 octubre 2024 \(clan2024.com\)](#)

If you are a non-neurosurgeon, please use this link depending:

Chileans:

<https://bit.ly/neurotrauma-transbank>

International participants:

<https://bit.ly/neurotrauma-paypal>

Registration fee: 50 USD.

2. **Second register to the course with Global Neuro here:** <https://globalneuro.org/EN/education/event-detail/79.html>

Course certificate

The course certificates can only be provided if the participant attends the entire event (100%) and will be sent to your email address after you complete the course evaluation.

Evaluation guidelines

All Global Neuro events apply the same evaluation process, either online (pre- and post-event evaluation) or/and onsite by paper and pencil questionnaires. This helps Global Neuro to ensure that we continue to meet your training needs.

Dress code

Business Casual.

No insurance

The event organization does not take out insurance to cover any individual against accidents, theft, or other risks.

Security

Security checks may be conducted at the entrance of the building. Wearing a name tag is compulsory during lectures, practical exercises, and group discussions.

Mobile phone use

Use of mobile phones is not allowed in the lecture halls and in other rooms during.

Intellectual property

Event materials, presentations, and case studies are the intellectual property of the event faculty. All rights are reserved. Check hazards and legal restrictions on www.globalneuro.org/legal

Recording, photographing, or copying lectures, practical exercises, case discussions, or any course materials is strictly forbidden. Participants violating intellectual property will be dismissed.

The Global Neuro Foundation reserves the right to film, photograph, and audio record during their events. Participants must understand that in this context they may appear in these recorded materials. The Global Neuro Foundation assumes participants agree that these recorded materials may be used for Global Neuro marketing and other purposes and made available to the public.



Global Neuro Foundation— Principles of Educational Events

1) Academic independence

Development of all curricula, design of scientific event programs, and selection of faculty are the sole responsibilities of volunteer surgeons from the Global Neuro network. All education is planned based on needs assessment data, designed and evaluated using concepts and evidence from the most current medical education research, and involving the expertise of the Global Neuro Education Institute (www.globalneuro.org). Industry participation is not allowed during the entire curriculum development and planning process to ensure academic independence and to keep content free from bias.

2) Compliance to accreditation and industry codes

All planning, organization, and execution of educational activities follow existing codes for accreditation of high-quality education:

- Accreditation Criteria of the Accreditation Council for Continuing Medical Education, USA (www.accme.org)
- ACCME Standards for Commercial Support: Standards to Ensure Independence in CME Activities (www.accme.org)
- Criteria for Accreditation of Live Educational Events of the European Accreditation Council for Continuing Medical Education (www.uems.eu)

- Events that receive direct or indirect unrestricted educational grants or in-kind support from industry also follow the ethical codes of the medical industry, such as:
- Eucomed Guidelines on Interactions with Healthcare Professionals (www.medtecheurope.org)
- AdvaMed Code of Ethics on Interactions with Health Care Professionals (www.advamed.org)
- Mecomed Guidelines on Interactions with Healthcare Professionals (www.mecomed.org)

3) Branding and advertising

No industry logos or advertising (with the exception of the Global Neuro Foundation) are permitted in the area where educational activities take place. Sponsors providing financial or in-kind support are allowed to have a promotional booth or run activities outside the educational area with approval from the event chairperson.

4) Personnel

Industry staff are not allowed to interfere with the educational content or engage in educational activities during the event.

Sponsors

A special thanks to our partner Integra for providing educational support grants for his event.



Also, thanks to NeurOptics and NTPlast for their commercial support and to Promedon and Bbraun for their in-kind support.





Codman's got you covered.

The global leader in neurosurgery.
Your one-stop, comprehensive source
for proven, market-leading solutions.

NPi[®]

The Neurological Pupil index™



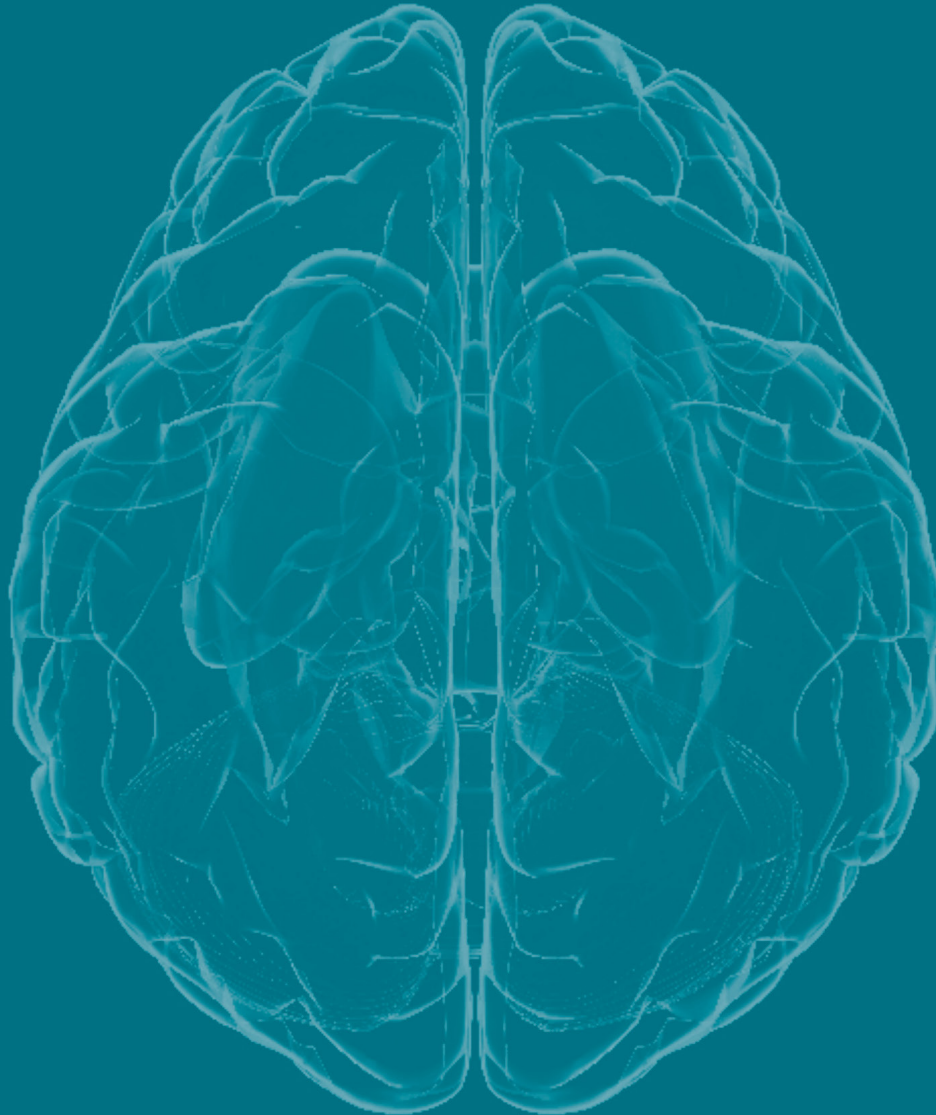
El Estándar de Oro para la evaluación pupilar en cuidados críticos y medicina de emergencia

NEUR OPTICS[®]

ntplast[®]
advanced biomedical solutions



Global Neuro



Stay up to date with our educational activities.
Visit www.globalneuro.org today.

Global Neuro

Clavadelstrasse 1 | 7270 Davos, Switzerland | info@globalneuro.org | T +41 79 337 0942
www.globalneuro.org